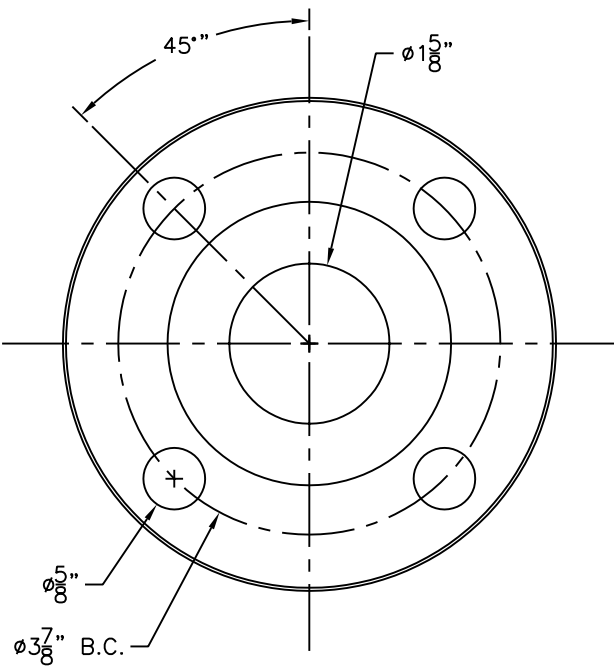
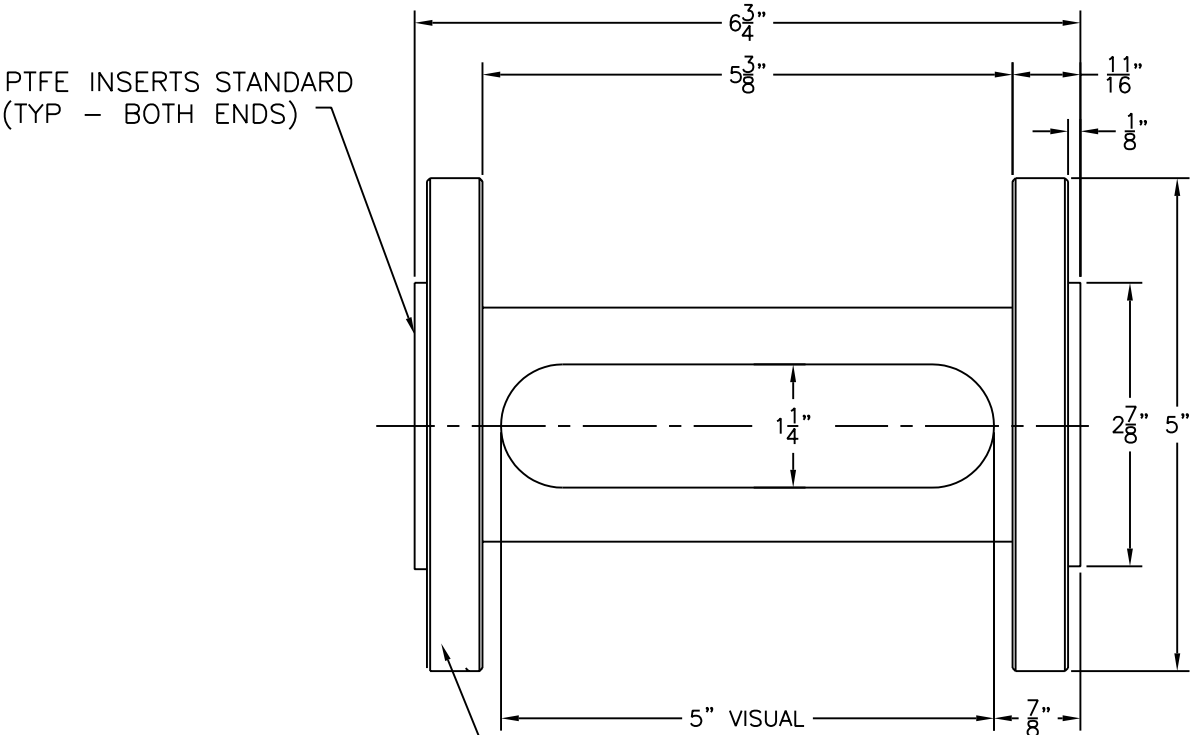


MODEL 1-1/2" LIG



O-RING SEALS [NOT SHOWN]
STANDARD: BUNA-N, EPDM,
FLUROELASTOMER [FKM]
ADD'L: FEP ENCAPSULATED SILICONE & AFLAS
FOR KALREZ - CALL FACTORY

UNLESS OTHERWISE NOTED: DIMENSIONS ARE IN INCHES DIMENSIONS SYMMETRICAL ABOUT CENTERLINES. BREAK CORNERS. REMOVE BURRS. CASTING FILLET RADII: 1/8R. CAST CORNER RADII: 1/16R.	MACHINING TOLERANCES: FRACTIONS ± 1/64 DECIMALS ± .010 ANGLES ± 1/2° FILLET RADII: 1/32 R. MACHINED FINISH, Ra: 125u IN. @ 1.4, 0.0 WITHIN 1/64 FIM	PAPAILIAS 245 PEGASUS AVENUE, NORTHVALE, NJ 07647					
		1 - 1/2" LIG ARMORED SIGHTFLOW INDICATOR					
THIS DRAWING IS THE SOLE PROPERTY OF THE J.G. PAPAILIAS COMPANY, INC. AND NEITHER THE DOCUMENT NOR THE INFOR- MATION CONTAINED HEREIN SHALL BE COPIED, REPRODUCED, DISCLOSED OR TRANSFERRED, EXCEPT AS AUTHORIZED IN WRITING.	DRAWN	RPS	04/07/05	SIZE	CAGE CODE	DRAWING NO.	REV.
	CHECKED			B	12740	1.5LIGGA	0
	APPROVED			SCALE: 1 : 1	WT:		SHEET 1 OF 1